

RAPPORT D'ANALYSE



Huile essentielle Bois de Santal Inde

Nom botanique latin: Santalum album

Provenance: Inde

Parties distillées: Bois sauvage

Culture: Conventionnelle

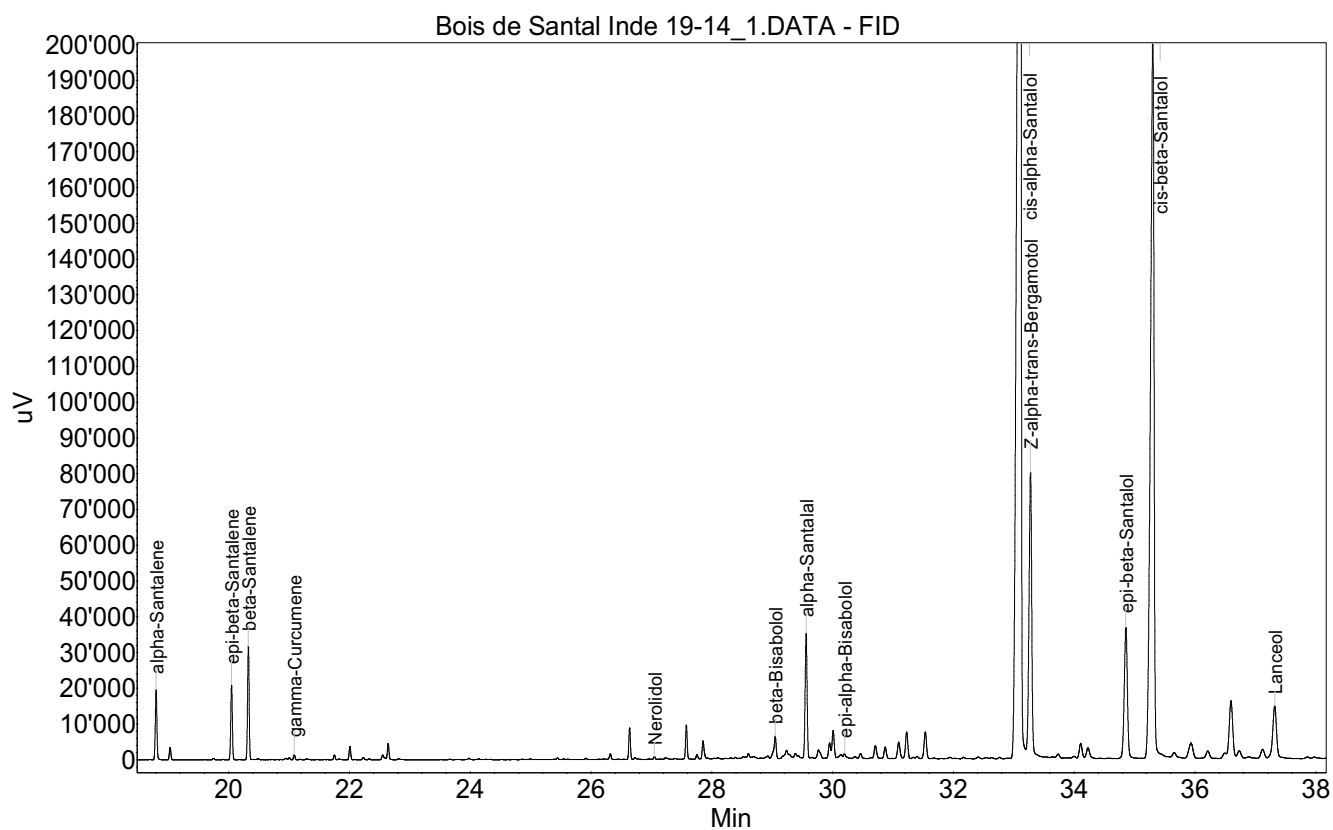
No de lot: 19-14

No de CE: 284-111-1

Date of analysis: 01.04.2019 21:37:22

System: GC-430 FID

Column: BGB Wax 60m / 0.25mm / 0.25um



RAPPORT D'ANALYSE



Huile essentielle

Bois de Santal Inde

Index	Name	Time [Min]	Area [uV.Min]	Area % [%]	Allergene
1	Santene	6.39	28.0	0.044	
2	alpha-Santalene	18.80	605.9	0.958	
3		19.03	106.6	0.169	
4	epi-beta-Santalene	20.05	646.0	1.022	
5	beta-Santalene	20.32	967.3	1.530	
6	gamma-Curcumene	21.08	43.2	0.068	
7		21.75	41.2	0.065	
8		22.01	113.2	0.179	
9		22.55	63.1	0.100	
10		22.64	145.1	0.230	
11		26.32	52.8	0.084	
12		26.64	270.0	0.427	
13	Nerolidol	27.05	24.2	0.038	
14		27.58	299.8	0.474	
15		27.75	41.7	0.066	
16		27.85	194.6	0.308	
17		28.60	36.3	0.057	
18		29.02	55.8	0.088	
19	beta-Bisabolol	29.05	225.6	0.357	
20		29.24	105.0	0.166	
21		29.28	40.0	0.063	
22		29.38	48.6	0.077	
23		29.43	25.1	0.040	
24	alpha-Santalal	29.56	1319.9	2.088	
25		29.76	135.0	0.213	
26		29.95	172.5	0.273	
27		30.01	326.8	0.517	
28		30.14	64.9	0.103	
29	epi-alpha-Bisabolol	30.20	61.1	0.097	
30		30.46	55.2	0.087	
31		30.71	159.3	0.252	
32		30.87	142.1	0.225	
33		31.09	223.9	0.354	
34		31.23	336.5	0.532	
35		31.53	348.9	0.552	
36	cis-alpha-Santalol	33.10	30913.7	48.895	
37	Z-alpha-trans-Bergamotol	33.28	4205.7	6.652	
38		34.11	219.7	0.347	
39		34.23	183.5	0.290	
40	epi-beta-Santalol	34.85	2207.0	3.491	
41	cis-beta-Santalol	35.30	13779.7	21.795	
42		35.66	87.8	0.139	
43		35.93	342.8	0.542	
44		36.21	149.1	0.236	

RAPPORT D'ANALYSE



Huile essentielle

Bois de Santal Inde

Index	Name	Time [Min]	Area [uV.Min]	Area % [%]	Allergene
45		36.50	88.8	0.141	
46		36.59	1098.4	1.737	
47		36.73	141.1	0.223	
48		37.12	166.0	0.263	
49	Lanceol	37.32	1049.5	1.660	
50	Nuciferol	38.45	320.9	0.508	
51		39.50	745.4	1.179	
Total			63224.1	100.000	