

RAPPORT D'ANALYSE



Huile essentielle

Ammi visnaga (Khella)

Nom botanique latin: Ammi visnaga

Provenance: Maroc

Parties distillées: Semences

Culture: Biologique

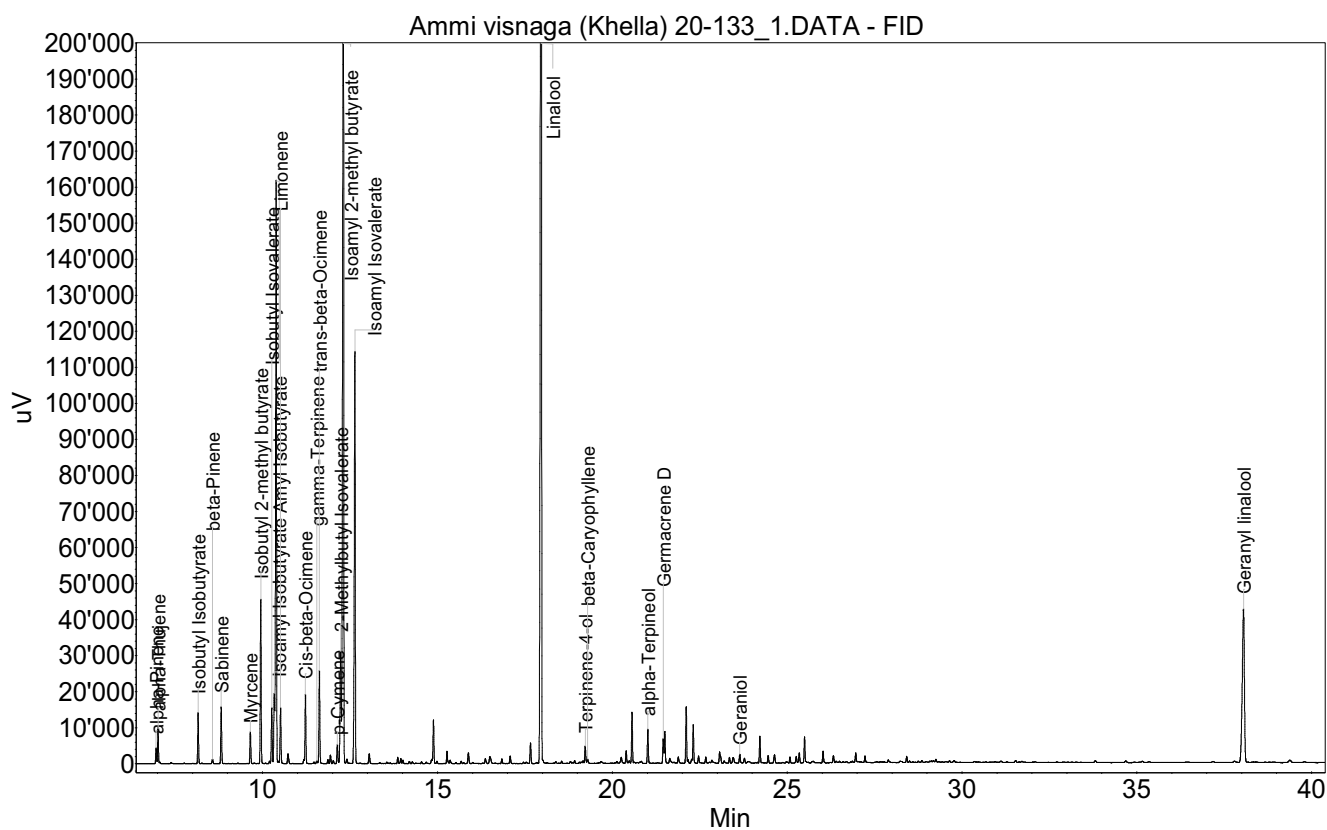
No de lot: 20-133

No de CE: 283-616-4

Date of analysis: 13.01.2021 19:06:00

System: GC-430 FID

Column: BGB Wax 60m / 0.25mm / 0.25um



RAPPORT D'ANALYSE



Huile essentielle

Ammi visnaga (Khella)

Index	Name	Time [Min]	Area [uV.Min]	Area % [%]	Allergene
1	alpha-Pinene	6.96	118.1	0.228	
2	alpha-Thujene	7.01	261.1	0.505	
3	Isobutyl Isobutyrate	8.16	390.0	0.754	
4	beta-Pinene	8.57	41.9	0.081	
5	Sabinene	8.82	466.7	0.903	
6	Myrcene	9.65	258.0	0.499	
7	Isobutyl 2-methyl butyrate	9.95	1298.9	2.513	
8		10.20	21.1	0.041	
9	Isobutyl Isovalerate	10.26	461.0	0.892	
10	Isoamyl Isobutyrate	10.33	579.8	1.121	
11	Amyl Isobutyrate	10.39	4873.5	9.427	
12	Limonene	10.51	493.9	0.955	Directive 2003/15EC (7th)
13		10.73	107.1	0.207	
14		11.18	30.1	0.058	
15	Cis-beta-Ocimene	11.23	562.4	1.088	
16	gamma-Terpinene	11.55	24.9	0.048	
17	trans-beta-Ocimene	11.63	764.2	1.478	
18		11.87	34.1	0.066	
19		11.94	71.3	0.138	
20		12.02	25.7	0.050	
21	p-Cymene	12.14	167.2	0.323	
22	2-Methylbutyl Isovalerate	12.23	1104.1	2.136	
23	Isoamyl 2-methyl butyrate	12.31	9355.8	18.098	
24		12.41	49.4	0.096	
25	Isoamyl Isovalerate	12.64	3730.5	7.216	
26		13.05	93.8	0.181	
27		13.87	50.7	0.098	
28		13.95	46.3	0.089	
29		14.01	30.2	0.058	
30		14.20	20.4	0.040	
31		14.89	406.2	0.786	
32		15.27	108.7	0.210	
33		15.36	36.3	0.070	
34		15.68	31.2	0.060	
35		15.88	103.9	0.201	
36		16.37	46.6	0.090	
37		16.50	103.8	0.201	
38		16.84	40.3	0.078	
39		17.08	67.5	0.131	
40		17.66	181.9	0.352	
41	Linalool	17.96	17355.3	33.572	Directive 2003/15EC (7th)
42	Terpinene-4-ol	19.23	144.3	0.279	
43	beta-Caryophyllene	19.29	40.3	0.078	
44		20.26	74.2	0.144	

RAPPORT D'ANALYSE



Huile essentielle

Amми visnaga (Khella)

Index	Name	Time [Min]	Area [uV.Min]	Area % [%]	Allergene
45		20.40	110.7	0.214	
46		20.49	26.1	0.051	
47		20.57	410.3	0.794	
48	alpha-Terpineol	21.02	301.4	0.583	
49	Germacrene D	21.46	219.3	0.424	
50		21.50	271.5	0.525	
51		21.64	58.2	0.113	
52		21.89	60.6	0.117	
53		22.11	448.6	0.868	
54		22.27	26.0	0.050	
55		22.32	316.7	0.613	
56		22.47	61.7	0.119	
57		22.67	56.2	0.109	
58		22.85	27.9	0.054	
59		23.07	145.7	0.282	
60		23.20	26.9	0.052	
61		23.35	49.9	0.097	
62		23.46	83.6	0.162	
63	Geraniol	23.65	81.5	0.158	Directive 2003/15EC (7th)
64		23.78	47.3	0.091	
65		24.22	231.6	0.448	
66		24.46	64.6	0.125	
67		24.64	93.0	0.180	
68		25.08	47.8	0.092	
69		25.26	61.3	0.119	
70		25.35	95.0	0.184	
71		25.50	218.0	0.422	
72		26.03	109.2	0.211	
73		26.32	64.1	0.124	
74		26.96	82.7	0.160	
75		27.23	57.7	0.112	
76		27.89	32.2	0.062	
77		28.42	53.2	0.103	
78		29.26	23.8	0.046	
79	Geranyl linalool	38.05	2997.0	5.797	
80		43.39	362.6	0.701	
Total			51696.4	100.000	