

# RAPPORT D'ANALYSE



## Huile essentielle

### Ammi visnaga (Khella)

Nom botanique latin: Ammi visnaga

Provenance: Maroc

Parties distillées: Semences

Culture: Biologique

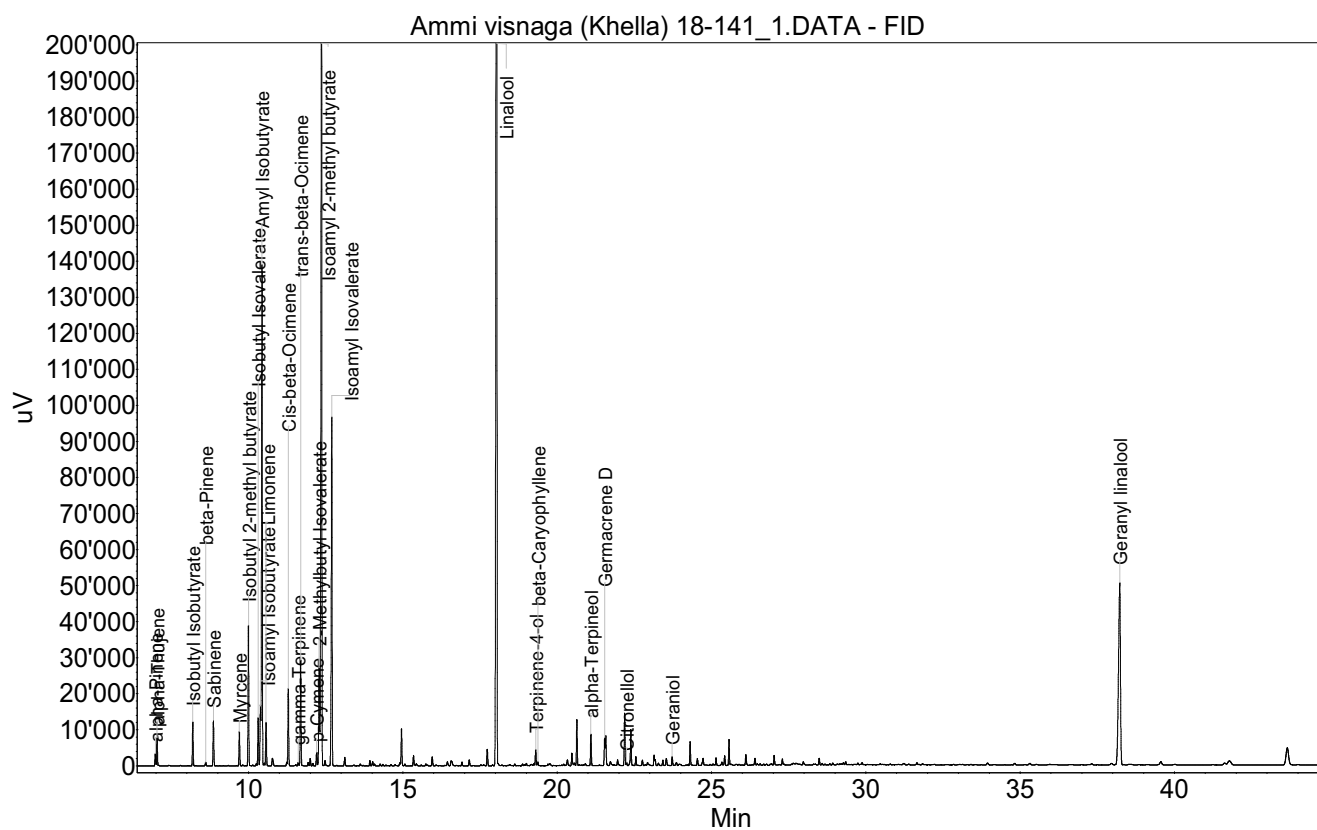
No de lot: 18-141

No de CE: 283-616-4

Date of analysis: 26.02.2019 12:23:05

System: GC-430 FID

Column: BGB Wax 60m / 0.25mm / 0.25um



# RAPPORT D'ANALYSE



Huile essentielle

**Ammi visnaga (Khella)**

Index	Name	Time [Min]	Area [uV.Min]	Area % [%]	Allergene
1	alpha-Pinene	6.98	96.0	0.210	
2	alpha-Thujene	7.03	216.6	0.473	
3	Isobutyl Isobutyrate	8.19	337.4	0.738	
4	beta-Pinene	8.61	32.3	0.071	
5	Sabinene	8.86	371.1	0.811	
6	Myrcene	9.70	271.2	0.593	
7	Isobutyl 2-methyl butyrate	9.99	1102.3	2.409	
8	Isobutyl Isovalerate	10.31	372.6	0.814	
9	Isoamyl Isobutyrate	10.38	182.7	0.399	
10	Amyl Isobutyrate	10.43	3629.9	7.934	
11		10.50	10.8	0.024	
12	Limonene	10.56	369.4	0.807	Directive 2003/15EC (7th)
13		10.77	92.8	0.203	
14		11.23	28.7	0.063	
15	Cis-beta-Ocimene	11.28	617.2	1.349	
16	gamma-Terpinene	11.61	29.3	0.064	
17	trans-beta-Ocimene	11.69	854.6	1.868	
18		11.93	30.0	0.066	
19		12.00	60.5	0.132	
20		12.08	22.0	0.048	
21	p-Cymene	12.20	119.4	0.261	
22	2-Methylbutyl Isovalerate	12.28	935.5	2.045	
23	Isoamyl 2-methyl butyrate	12.36	7805.7	17.061	
24		12.48	58.3	0.127	
25	Isoamyl Isovalerate	12.69	3118.2	6.816	
26		13.11	81.0	0.177	
27		13.93	43.8	0.096	
28		14.02	38.9	0.085	
29		14.08	17.3	0.038	
30		14.90	27.2	0.059	
31		14.95	310.1	0.678	
32		15.34	87.9	0.192	
33		15.95	84.0	0.184	
34		16.44	41.0	0.090	
35		16.56	84.6	0.185	
36		16.91	31.2	0.068	
37		17.15	54.1	0.118	
38		17.73	146.9	0.321	
39	Linalool	18.04	15706.0	34.329	Directive 2003/15EC (7th)
40		18.09	15.2	0.033	
41	Terpinene-4-ol	19.30	134.2	0.293	
42	beta-Caryophyllene	19.37	34.0	0.074	
43		20.33	67.7	0.148	
44		20.47	120.5	0.263	

# RAPPORT D'ANALYSE



Huile essentielle

**Ammi visnaga (Khella)**

Index	Name	Time [Min]	Area [uV.Min]	Area % [%]	Allergene
45		20.56	25.6	0.056	
46		20.64	372.0	0.813	
47	alpha-Terpineol	21.09	274.5	0.600	
48	Germacrene D	21.54	237.8	0.520	
49		21.57	255.7	0.559	
50		21.72	51.3	0.112	
51		21.95	31.9	0.070	
52		22.18	436.6	0.954	
53	Citronellol	22.24	30.9	0.068	Directive 2003/15EC (7th)
54		22.39	334.6	0.731	
55		22.55	83.6	0.183	
56		22.76	48.9	0.107	
57		23.14	77.3	0.169	
58		23.15	59.2	0.129	
59		23.28	28.3	0.062	
60		23.42	48.8	0.107	
61		23.54	81.8	0.179	
62	Geraniol	23.73	77.1	0.169	Directive 2003/15EC (7th)
63		24.31	205.4	0.449	
64		24.54	58.3	0.127	
65		24.73	77.1	0.169	
66		25.15	56.8	0.124	
67		25.34	38.8	0.085	
68		25.43	89.8	0.196	
69		25.57	212.6	0.465	
70		25.63	19.5	0.043	
71		26.11	101.6	0.222	
72		26.41	61.2	0.134	
73		27.03	83.2	0.182	
74		27.30	56.7	0.124	
75		27.97	35.1	0.077	
76		28.49	57.1	0.125	
77		29.35	27.0	0.059	
78	Geranyl linalool	38.23	3659.5	7.999	
79		43.66	465.2	1.017	
Total			45750.8	100.000	