

# RAPPORT D'ANALYSE



## Huile essentielle

### Ajowan 20-102\_1

Nom botanique latin: *Trachyspermum ammi*

Provenance: Inde

Parties distillées: Semences

Culture: Biologique

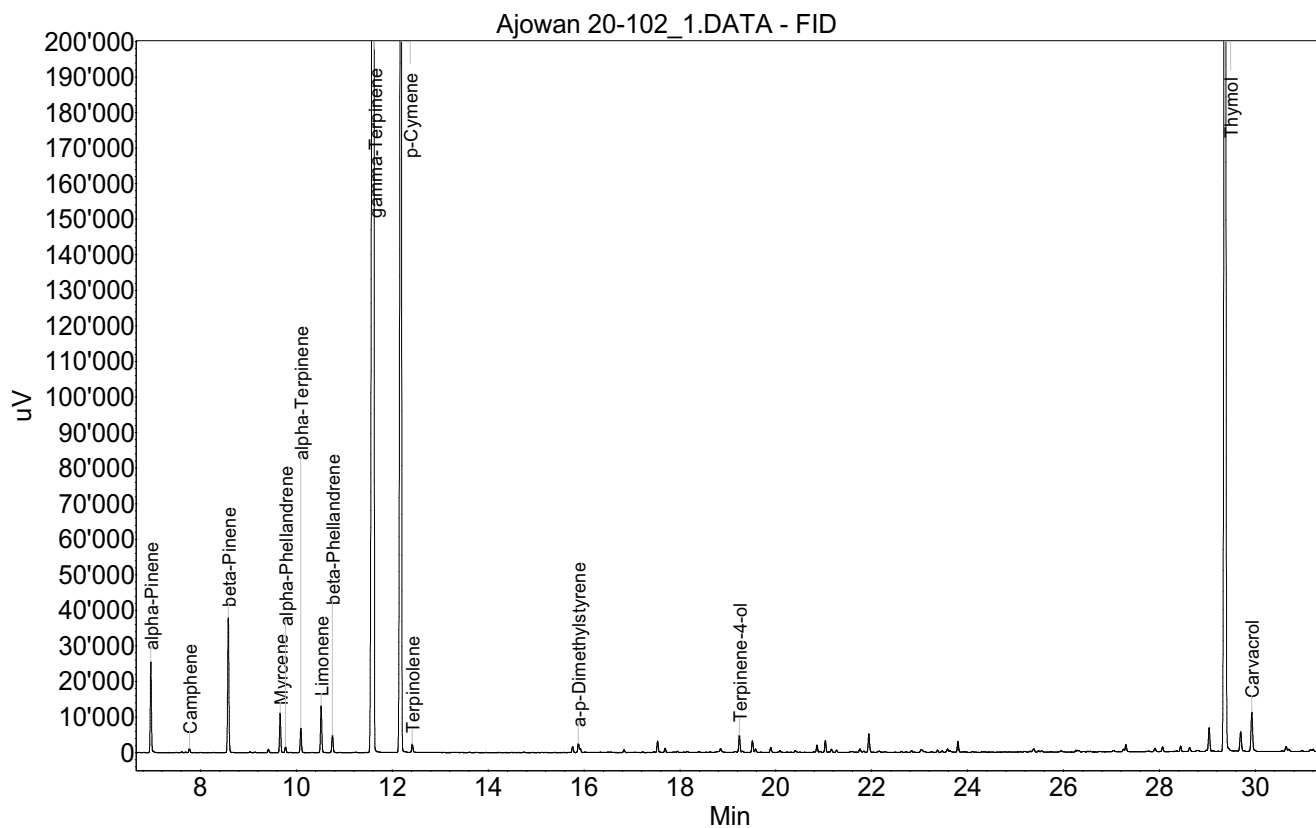
No de lot: 20-102

No de CE: 307-690-5

Date of analysis: 12.01.2021 13:11:25

System: GC-430 FID

Column: BGB Wax 60m / 0.25mm / 0.25um



# RAPPORT D'ANALYSE



Huile essentielle

Ajowan 20-102\_1

Index	Name	Time [Min]	Area [uV.Min]	Area % [%]	Allergene
1	alpha-Pinene	6.97	706.9	1.002	
2	Camphene	7.77	34.5	0.049	
3	beta-Pinene	8.58	1153.6	1.635	
4		9.42	28.6	0.041	
5	Myrcene	9.66	318.6	0.452	
6	alpha-Phellandrene	9.78	51.0	0.072	
7	alpha-Terpinene	10.09	209.0	0.296	
8	Limonene	10.52	406.9	0.577	Directive 2003/15EC (7th)
9	beta-Phellandrene	10.75	159.2	0.226	
10	gamma-Terpinene	11.61	26873.1	38.084	
11	p-Cymene	12.18	14739.2	20.888	
12	Terpinolene	12.42	75.2	0.107	
13		15.76	55.0	0.078	
14	a-p-Dimethylstyrene	15.88	79.1	0.112	
15		15.92	36.5	0.052	
16		16.83	25.2	0.036	
17		17.53	104.4	0.148	
18		17.69	41.1	0.058	
19		18.85	40.1	0.057	
20	Terpinene-4-ol	19.24	154.9	0.219	
21		19.51	112.8	0.160	
22		19.58	32.7	0.046	
23		19.89	47.6	0.068	
24		20.86	60.2	0.085	
25		21.03	103.0	0.146	
26		21.16	34.5	0.049	
27		21.75	49.8	0.071	
28		21.94	179.4	0.254	
29		23.03	45.4	0.064	
30		23.58	32.7	0.046	
31		23.63	21.4	0.030	
32		23.80	94.3	0.134	
33		27.30	75.0	0.106	
34		27.91	38.1	0.054	
35		28.06	50.9	0.072	
36		28.44	49.3	0.070	
37		28.63	44.5	0.063	
38		29.04	245.8	0.348	
39	Thymol	29.37	22826.2	32.349	
40		29.69	219.7	0.311	
41	Carvacrol	29.92	449.5	0.637	
42		30.64	70.2	0.100	
43		33.26	318.7	0.452	
44		33.61	68.7	0.097	

# RAPPORT D'ANALYSE



**Huile essentielle**

**Ajowan 20-102\_1**

Index	Name	Time [Min]	Area [uV.Min]	Area % [%]	Allergene
Total			70562.6	100.000	