

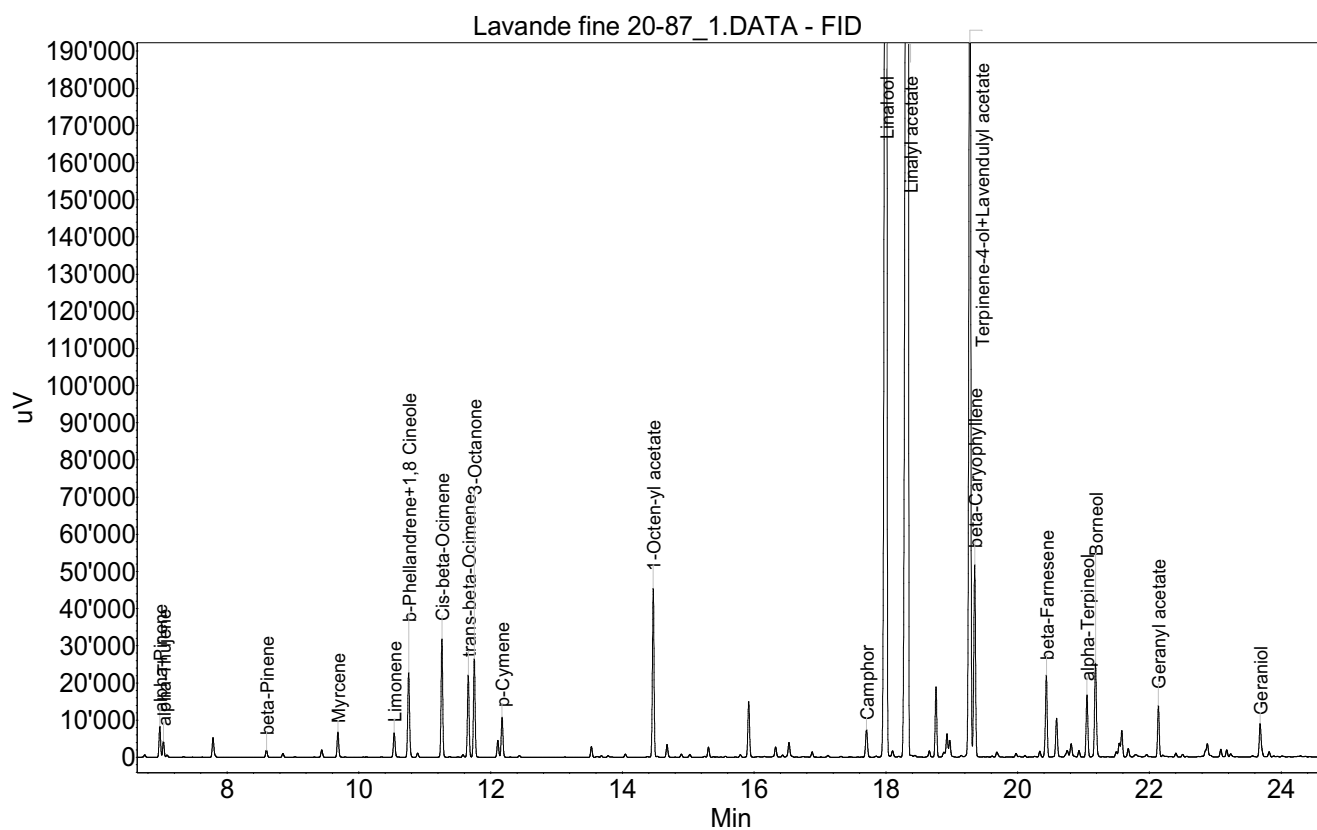
RAPPORT D'ANALYSE



Huile essentielle Lavande fine

Nom botanique latin: *Lavandula angustifolia*
Provenance: France
Parties distillées: Sommités fleuries
Culture: Biologique
No de lot: 20-87
No de CE: 289-995-2

Date of analysis: 13.08.2020 12:58:28
System: GC-430 FID
Column: BGB Wax 60m / 0.25mm / 0.25um



RAPPORT D'ANALYSE



Huile essentielle Lavande fine

Index	Name	Time [Min]	Area [uV.Min]	Area % [%]	Allergene
1	alpha-Pinene	6.98	232.4	0.343	
2	alpha-Thujene	7.03	117.6	0.174	
3		7.09	18.4	0.027	
4		7.79	167.1	0.247	
5	beta-Pinene	8.60	57.8	0.085	
6		8.85	30.6	0.045	
7		9.44	63.0	0.093	
8	Myrcene	9.68	196.7	0.290	
9	Limonene	10.54	209.7	0.309	Directive 2003/15EC (7th)
10	b-Phellandrene+1,8 Cineole	10.76	730.3	1.078	
11		10.89	34.0	0.050	
12	Cis-beta-Ocimene	11.26	913.5	1.348	
13	trans-beta-Ocimene	11.66	647.7	0.956	
14	3-Octanone	11.75	771.3	1.138	
15		12.11	136.4	0.201	
16	p-Cymene	12.17	329.8	0.487	
17		13.53	81.7	0.121	
18	1-Octen-yl acetate	14.47	1291.2	1.905	
19		14.68	100.7	0.149	
20		15.31	76.2	0.112	
21		15.92	455.4	0.672	
22		16.33	89.6	0.132	
23		16.53	136.2	0.201	
24		16.88	43.7	0.065	
25	Camphor	17.71	249.9	0.369	
26	Linalool	18.00	18846.1	27.811	Directive 2003/15EC (7th)
27		18.10	62.6	0.092	
28	Linalyl acetate	18.33	25533.0	37.679	
29		18.66	52.0	0.077	
30		18.76	532.1	0.785	
31		18.93	249.4	0.368	
32	Terpinene-4-ol+Lavendulyl acetate	19.28	8553.4	12.622	
33	beta-Caryophyllene	19.35	1599.5	2.360	
34		19.68	51.9	0.077	
35		19.98	39.0	0.058	
36		20.34	46.4	0.068	
37	beta-Farnesene	20.44	684.0	1.009	
38		20.59	337.0	0.497	
39		20.75	74.3	0.110	
40		20.81	131.5	0.194	
41		20.93	53.7	0.079	
42	alpha-Terpineol	21.05	516.4	0.762	
43	Borneol	21.18	838.4	1.237	
44		21.49	19.5	0.029	

RAPPORT D'ANALYSE



Huile essentielle Lavande fine

Index	Name	Time [Min]	Area [uV.Min]	Area % [%]	Allergene
45		21.54	32.8	0.048	
46		21.58	129.4	0.191	
47		21.68	70.5	0.104	
48	Geranyl acetate	22.14	401.3	0.592	
49		22.20	21.6	0.032	
50		22.40	32.2	0.048	
51		22.88	169.8	0.251	
52		23.08	61.8	0.091	
53		23.17	52.4	0.077	
54	Geraniol	23.68	322.9	0.477	Directive 2003/15EC (7th)
55		23.82	42.9	0.063	
56		25.30	42.5	0.063	
57		25.37	46.4	0.068	
58		25.60	43.9	0.065	
59		26.26	137.8	0.203	
60		26.36	69.5	0.103	
61		26.44	642.1	0.947	
62	Caryophyllene oxide	26.57	43.2	0.064	
Total			67764.2	100.000	