

# RAPPORT D'ANALYSE



## Huile essentielle Lavande fine

Nom botanique latin: *Lavandula angustifolia*

Provenance: France

Parties distillées: Sommités fleuries

Culture: Biologique

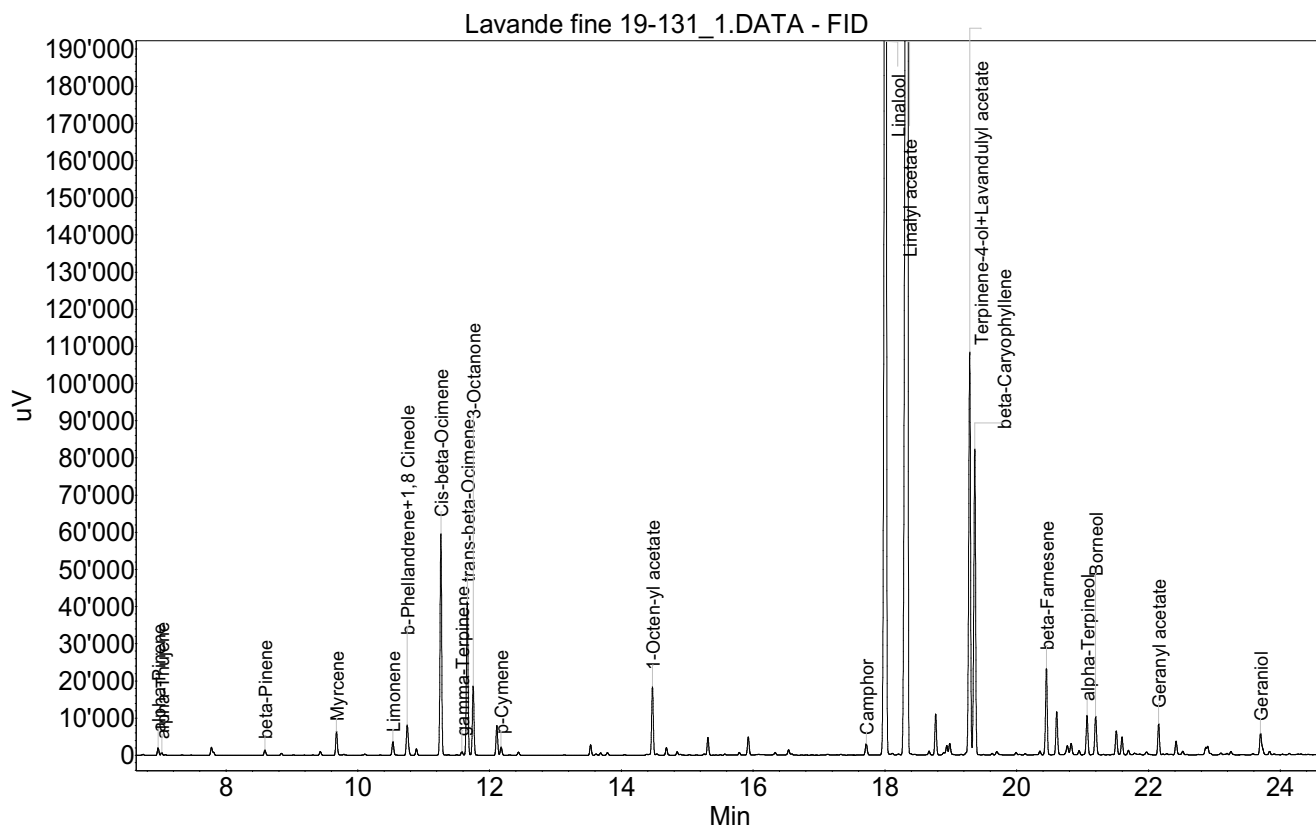
No de lot: 19-131

No de CE: 289-995-2

Date of analysis: 31.03.2020 15:05:10

System: GC-430 FID

Column: BGB Wax 60m / 0.25mm / 0.25um



# RAPPORT D'ANALYSE



**Huile essentielle**

**Lavande fine 19-131**

Index	Name	Time [Min]	Area [uV.Min]	Area % [%]	Allergene
1	alpha-Pinene	6.97	57.4	0.107	
2	alpha-Thujene	7.02	22.3	0.042	
3		7.78	64.7	0.121	
4		7.81	21.0	0.039	
5	beta-Pinene	8.59	44.7	0.083	
6		9.43	32.5	0.061	
7	Myrcene	9.68	188.7	0.352	
8	Limonene	10.53	115.8	0.216	Directive 2003/15EC (7th)
9	b-Phellandrene+1,8 Cineole	10.75	286.8	0.535	
10		10.89	50.2	0.094	
11	Cis-beta-Ocimene	11.26	1709.3	3.188	
12	gamma-Terpinene	11.58	30.9	0.058	
13	trans-beta-Ocimene	11.66	1201.8	2.241	
14	3-Octanone	11.75	541.6	1.010	
15		12.11	236.2	0.441	
16	p-Cymene	12.17	69.9	0.130	
17		12.44	25.8	0.048	
18		13.53	81.4	0.152	
19		13.62	11.0	0.021	
20		13.69	19.0	0.035	
21		13.79	22.3	0.042	
22	1-Octen-yl acetate	14.47	527.3	0.983	
23		14.68	60.3	0.112	
24		14.85	26.8	0.050	
25		15.31	133.3	0.249	
26		15.79	20.2	0.038	
27		15.93	149.5	0.279	
28		16.33	24.8	0.046	
29		16.54	58.7	0.110	
30	Camphor	17.72	107.3	0.200	
31	Linalool	18.01	14526.2	27.091	Directive 2003/15EC (7th)
32	Linalyl acetate	18.34	22580.4	42.112	
33		18.67	35.6	0.066	
34		18.77	318.6	0.594	
35		18.94	104.5	0.195	
36		18.98	107.4	0.200	
37	Terpinene-4-ol+Lavandulyl acetate	19.29	3459.9	6.453	
38	beta-Caryophyllene	19.36	2583.4	4.818	
39		19.70	35.6	0.066	
40		19.99	25.8	0.048	
41		20.35	29.9	0.056	
42	beta-Farnesene	20.45	704.5	1.314	
43		20.61	368.6	0.687	
44		20.77	94.7	0.177	

# RAPPORT D'ANALYSE



Huile essentielle

Lavande fine 19-131

Index	Name	Time [Min]	Area [uV.Min]	Area % [%]	Allergene
45		20.83	111.5	0.208	
46		20.95	35.3	0.066	
47	alpha-Terpineol	21.07	336.6	0.628	
48	Borneol	21.20	345.6	0.645	
49		21.51	212.1	0.396	
50		21.60	144.5	0.269	
51		21.70	37.0	0.069	
52		21.97	35.4	0.066	
53	Geranyl acetate	22.15	244.9	0.457	
54		22.42	116.3	0.217	
55		22.52	35.5	0.066	
56		22.87	58.1	0.108	
57		22.90	84.2	0.157	
58		23.25	29.7	0.055	
59	Geraniol	23.70	181.5	0.338	Directive 2003/15EC (7th)
60		23.72	52.7	0.098	
61		23.84	28.8	0.054	
62		26.28	26.9	0.050	
63		26.46	306.6	0.572	
64	Caryophyllene oxide	26.59	53.8	0.100	
65		28.11	27.1	0.051	
66		29.35	142.4	0.266	
67		30.54	56.6	0.105	
Total			53619.5	100.000	