

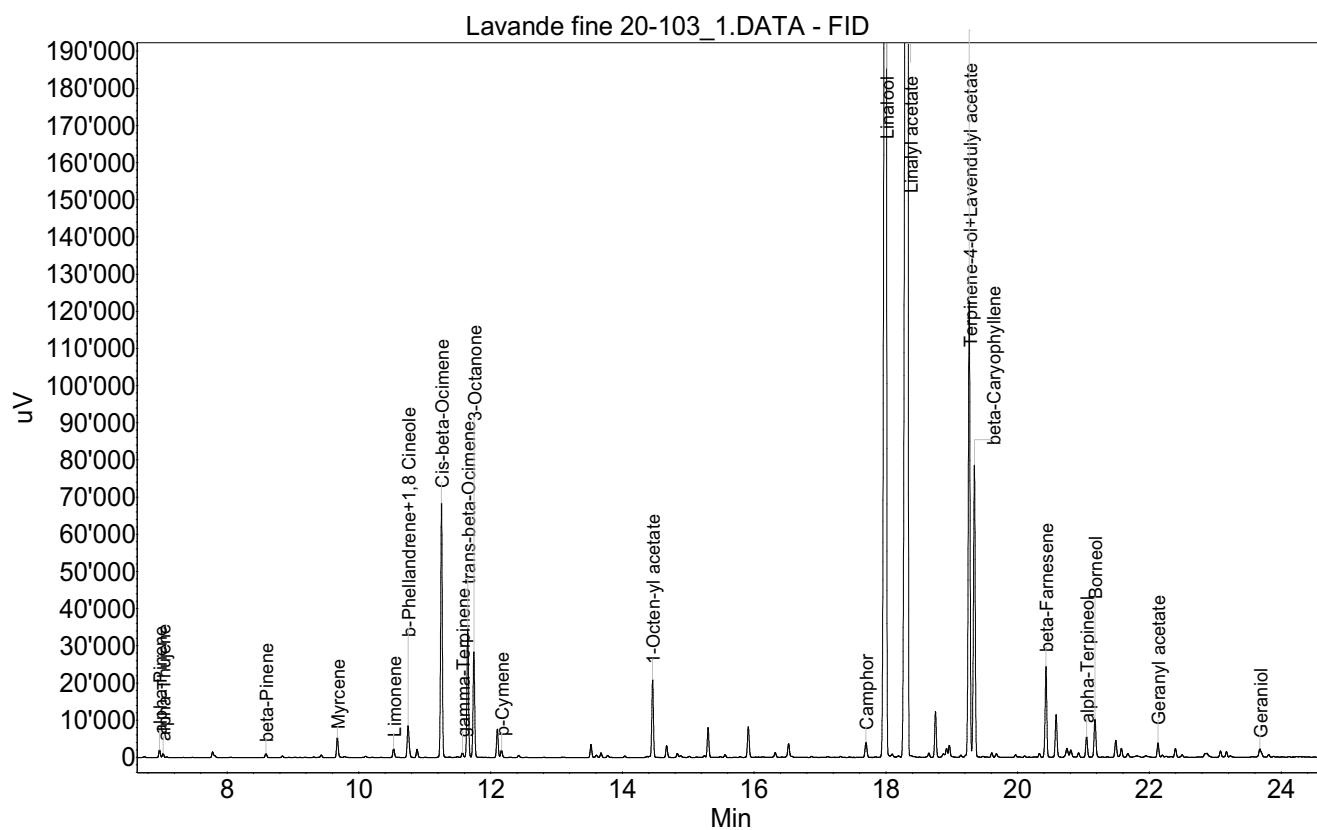
RAPPORT D'ANALYSE



Huile essentielle Lavande fine

Nom botanique latin: *Lavandula angustifolia*
Provenance: France
Parties distillées: Sommités fleuries
Culture: Sauvage
No de lot: 20-103
No de CE: 289-995-2

Date of analysis: 12.01.2021 18:43:44
System: GC-430 FID
Column: BGB Wax 60m / 0.25mm / 0.25um



RAPPORT D'ANALYSE



Huile essentielle Lavande fine

Index	Name	Time [Min]	Area [uV.Min]	Area % [%]	Allergene
1	alpha-Pinene	6.97	56.1	0.090	
2	alpha-Thujene	7.03	28.9	0.047	
3		7.78	41.8	0.067	
4		7.80	14.4	0.023	
5	beta-Pinene	8.59	33.5	0.054	
6	Myrcene	9.67	157.3	0.253	
7	Limonene	10.53	74.8	0.120	Directive 2003/15EC (7th)
8	b-Phellandrene+1,8 Cineole	10.75	291.9	0.469	
9		10.88	65.3	0.105	
10	Cis-beta-Ocimene	11.25	1966.4	3.161	
11	gamma-Terpinene	11.57	39.1	0.063	
12	trans-beta-Ocimene	11.65	1021.3	1.642	
13	3-Octanone	11.75	826.9	1.329	
14		12.10	225.1	0.362	
15	p-Cymene	12.17	60.9	0.098	
16		13.52	101.8	0.164	
17		13.60	20.7	0.033	
18		13.68	35.6	0.057	
19	1-Octen-yl acetate	14.46	597.2	0.960	
20		14.67	95.5	0.154	
21		14.83	31.9	0.051	
22		14.89	18.1	0.029	
23		15.30	223.8	0.360	
24		15.56	21.3	0.034	
25		15.91	257.4	0.414	
26		16.32	43.3	0.070	
27		16.52	134.5	0.216	
28	Camphor	17.70	139.4	0.224	
29	Linalool	18.00	18901.1	30.386	Directive 2003/15EC (7th)
30		18.09	30.9	0.050	
31	Linalyl acetate	18.33	26646.6	42.837	
32		18.65	35.9	0.058	
33		18.75	350.8	0.564	
34		18.92	109.0	0.175	
35		18.96	104.8	0.168	
36	Terpinene-4-ol+Lavendulyl acetate	19.27	3831.8	6.160	
37	beta-Caryophyllene	19.34	2453.4	3.944	
38		19.61	35.7	0.057	
39		19.68	33.8	0.054	
40		19.97	21.4	0.034	
41		20.33	30.0	0.048	
42	beta-Farnesene	20.43	730.0	1.174	
43		20.58	362.2	0.582	
44		20.75	95.3	0.153	

RAPPORT D'ANALYSE



Huile essentielle Lavande fine

Index	Name	Time [Min]	Area [uV.Min]	Area % [%]	Allergene
45		20.81	73.3	0.118	
46		20.93	36.0	0.058	
47	alpha-Terpineol	21.05	172.8	0.278	
48	Borneol	21.17	342.6	0.551	
49		21.49	147.7	0.237	
50		21.58	76.8	0.123	
51		21.67	34.0	0.055	
52	Geranyl acetate	22.13	115.4	0.186	
53		22.20	22.0	0.035	
54		22.40	72.8	0.117	
55		22.50	23.5	0.038	
56		22.87	74.9	0.120	
57		23.08	53.5	0.086	
58		23.17	47.9	0.077	
59		23.23	15.0	0.024	
60	Geraniol	23.68	73.2	0.118	Directive 2003/15EC (7th)
61		23.69	31.7	0.051	
62		23.81	22.6	0.036	
63		25.60	58.7	0.094	
64		26.26	35.4	0.057	
65		26.43	234.9	0.378	
66		29.32	42.5	0.068	
Total			62204.4	100.000	