

RAPPORT D'ANALYSE



Huile essentielle

Néroli

Nom botanique latin: Citrus aurantium aurantium (fl)

Provenance: Tunisie

Parties distillées: Fleurs

Culture: Bio

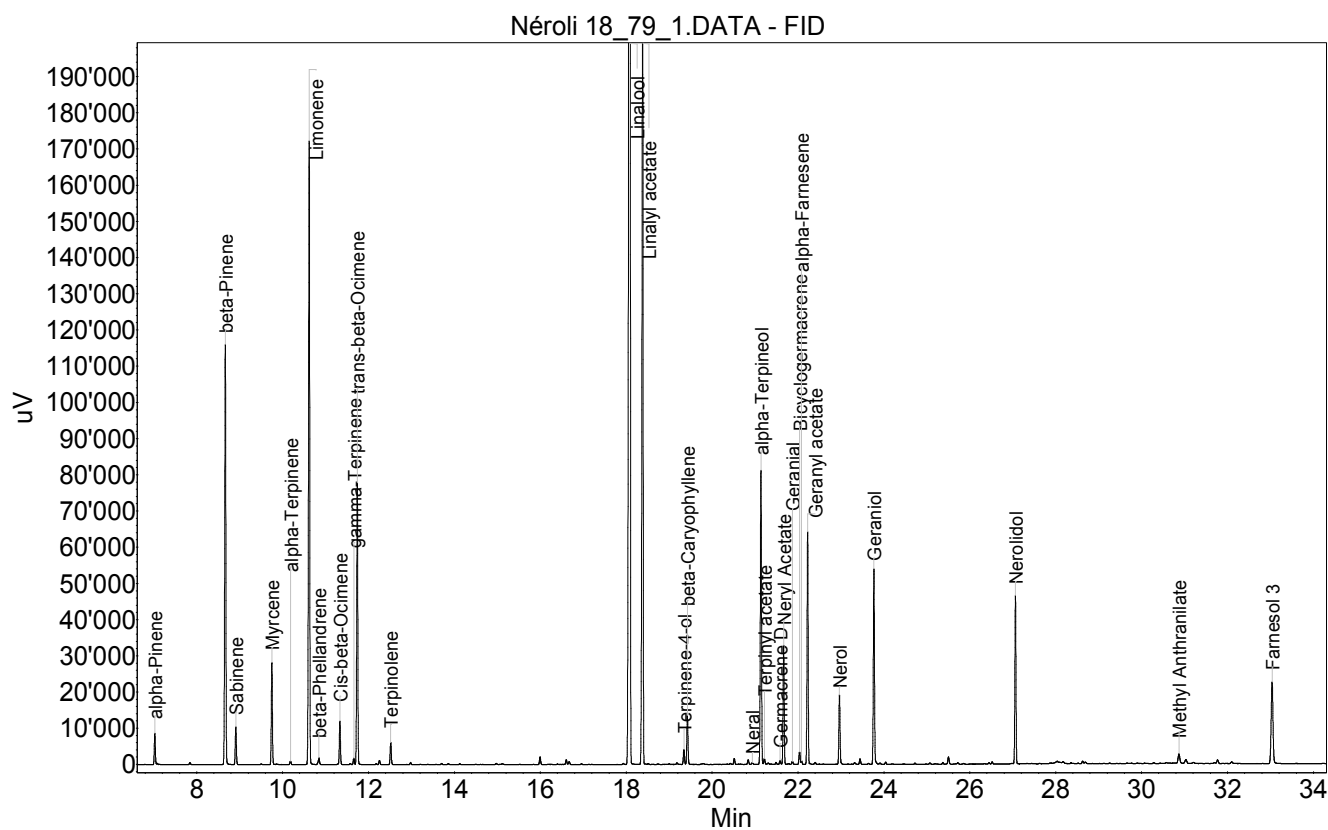
No de lot: 18-79

No de CE: 277-143-2

Date of analysis: 05.09.2018 12:33:20

System: GC-430 FID

Column: BGB Wax 60m / 0.25mm / 0.25um



Huile essentielle

Néroli

Index	Name	Time [Min]	Area [uV.Min]	Area % [%]	Allergene
1	alpha-Pinene	7.03	240.1	0.465	
2	beta-Pinene	8.67	3518.5	6.815	
3	Sabinene	8.91	305.1	0.591	
4	Myrcene	9.75	802.8	1.555	
5	alpha-Terpinene	10.18	30.6	0.059	
6	Limonene	10.62	5370.1	10.401	Directive 2003/15EC (7th)
7	beta-Phellandrene	10.85	66.9	0.130	
8	Cis-beta-Ocimene	11.33	352.7	0.683	
9	gamma-Terpinene	11.66	54.3	0.105	
10	trans-beta-Ocimene	11.74	2254.6	4.367	
11		12.25	34.5	0.067	
12	Terpinolene	12.52	187.6	0.363	
13		12.98	17.6	0.034	
14		15.99	65.9	0.128	
15		16.61	42.5	0.082	
16		16.67	27.9	0.054	
17	Linalool	18.08	20050.1	38.833	Directive 2003/15EC (7th)
18	Linalyl acetate	18.38	6707.2	12.990	
19	Terpinene-4-ol	19.34	129.8	0.251	
20	beta-Caryophyllene	19.42	428.0	0.829	
21		20.52	49.2	0.095	
22		20.84	41.2	0.080	
23	Neral	20.94	13.4	0.026	(= Citral) Directive 2003/15EC (7th)
24	alpha-Terpineol	21.14	2532.6	4.905	
25	Terpinyl acetate	21.22	49.6	0.096	
26	Germacrene D	21.58	34.2	0.066	
27	Neryl Acetate	21.67	963.3	1.866	
28	Geranial	21.87	29.6	0.057	(= Citral) Directive 2003/15EC (7th)
29	Bicyclogermacrene	22.04	115.4	0.223	
30	alpha-Farnesene	22.08	27.6	0.053	
31	Geranyl acetate	22.23	1899.4	3.679	
32	Nerol	22.96	596.0	1.154	
33		23.44	49.0	0.095	
34	Geraniol	23.77	1669.2	3.233	Directive 2003/15EC (7th)
35		25.50	72.8	0.141	
36	Nerolidol	27.06	1351.1	2.617	
37		28.63	26.8	0.052	
38		28.69	18.4	0.036	
39	Methyl Anthranilate	30.87	121.2	0.235	
40		31.03	51.9	0.101	
41		31.77	37.0	0.072	
42	Farnesol 3	33.04	1111.4	2.153	Directive 2003/15EC (7th)
43		35.98	84.5	0.164	

RAPPORT D'ANALYSE



Huile essentielle

Néroli

Index	Name	Time [Min]	Area [uV.Min]	Area % [%]	Allergene
Total			51631.8	100.000	