

RAPPORT D'ANALYSE



Huile essentielle Pruche 20-19

Nom botanique latin: *Tsuga canadensis*

Provenance: Canada

Parties distillées: Rameaux et aiguilles

Culture: Biologique

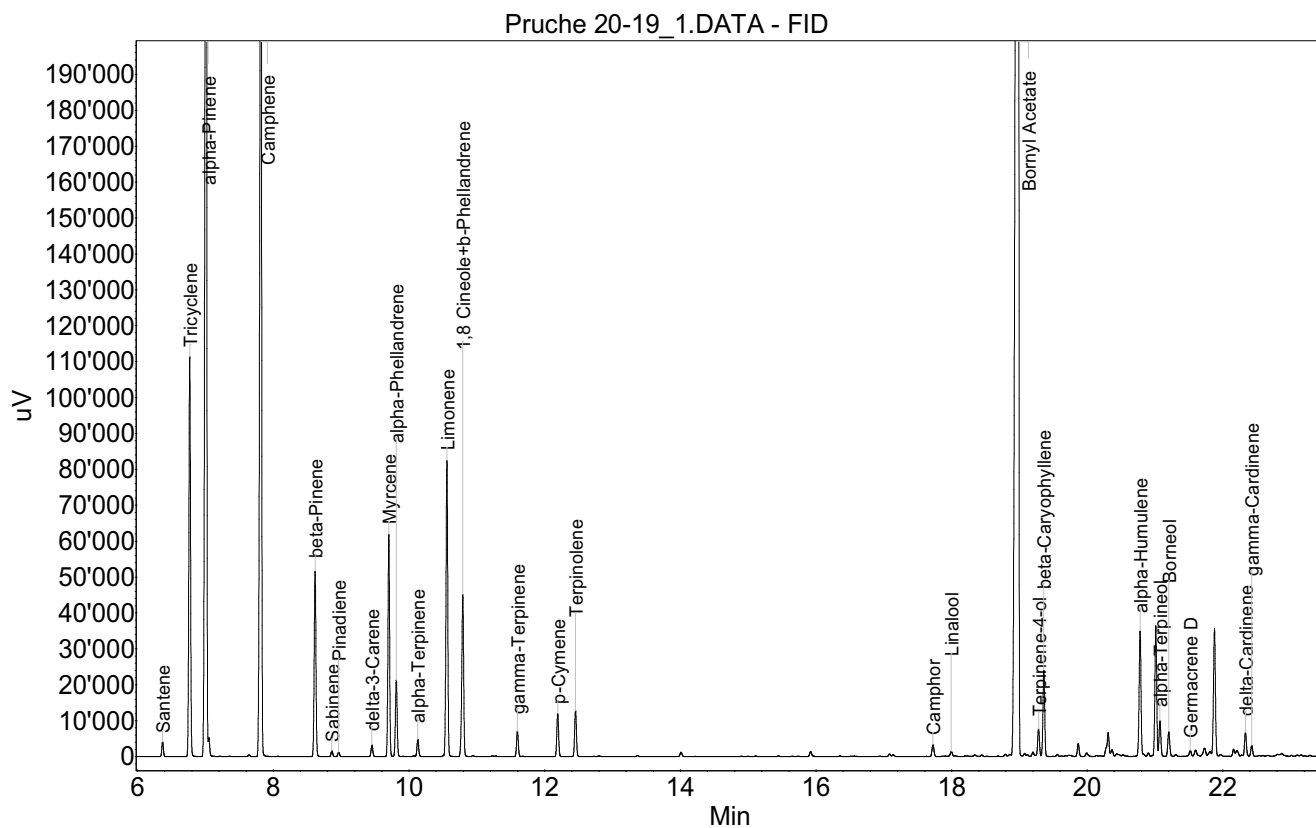
No de lot: 20-19

No de CE: 289-926-6

Date of analysis: 09.06.2020 12:56:21

System: GC-430 FID

Column: BGB Wax 60m / 0.25mm / 0.25um



RAPPORT D'ANALYSE



Huile essentielle Pruche 20-19

Index	Name	Time [Min]	Area [uV.Min]	Area % [%]	Allergene
1	Santene	6.37	110.4	0.165	
2	Tricyclene	6.77	3112.0	4.641	
3	alpha-Pinene	7.01	11526.1	17.191	
4	Camphene	7.82	8976.6	13.388	
5	beta-Pinene	8.62	1550.0	2.312	
6	Sabinene	8.86	47.3	0.071	
7	Pinadiene	8.96	37.3	0.056	
8	delta-3-Carene	9.45	96.8	0.144	
9	Myrcene	9.70	1750.2	2.610	
10	alpha-Phellandrene	9.81	642.9	0.959	
11	alpha-Terpinene	10.13	146.3	0.218	
12	Limonene	10.56	2484.2	3.705	Directive 2003/15EC (7th)
13	1,8 Cineole+b-Phellandrene	10.79	1448.7	2.161	
14	gamma-Terpinene	11.60	215.1	0.321	
15	p-Cymene	12.19	369.3	0.551	
16	Terpinolene	12.46	390.3	0.582	
17		14.01	42.2	0.063	
18		15.92	52.7	0.079	
19	Camphor	17.73	113.1	0.169	
20	Linalool	18.00	55.0	0.082	Directive 2003/15EC (7th)
21	Bornyl Acetate	18.98	27114.2	40.440	
22		19.12	14.8	0.022	
23		19.20	45.2	0.067	
24	Terpinene-4-ol	19.28	241.2	0.360	
25	beta-Caryophyllene	19.36	730.0	1.089	
26		19.87	111.0	0.166	
27		19.99	39.0	0.058	
28		20.28	53.9	0.080	
29		20.31	214.4	0.320	
30		20.36	62.2	0.093	
31		20.43	18.6	0.028	
32	alpha-Humulene	20.78	1140.3	1.701	
33		20.90	28.8	0.043	
34		21.01	1116.0	1.665	
35	alpha-Terpineol	21.07	311.4	0.464	
36	Borneol	21.20	226.0	0.337	
37	Germacrene D	21.52	57.2	0.085	
38		21.60	67.4	0.101	
39		21.73	83.8	0.125	
40		21.88	1089.8	1.625	
41		21.97	15.0	0.022	
42		22.16	63.7	0.095	
43		22.20	70.8	0.106	
44	delta-Cardinene	22.33	225.4	0.336	

RAPPORT D'ANALYSE



Huile essentielle Pruche 20-19

Index	Name	Time [Min]	Area [uV.Min]	Area % [%]	Allergene
45	gamma-Cardinene	22.42	97.1	0.145	
46		26.46	50.2	0.075	
47	Nerolidol	27.00	137.1	0.205	
48		27.38	62.5	0.093	
49		27.78	27.7	0.041	
50		29.35	32.2	0.048	
51		29.41	110.1	0.164	
52		29.63	44.8	0.067	
53		44.36	179.8	0.268	
Total			67047.9	100.000	