

# RAPPORT D'ANALYSE



## Huile essentielle Pruche

Nom botanique latin: *Tsuga canadensis*

Provenance: Canada

Parties distillées: Rameaux et aiguilles

Culture: Biologique

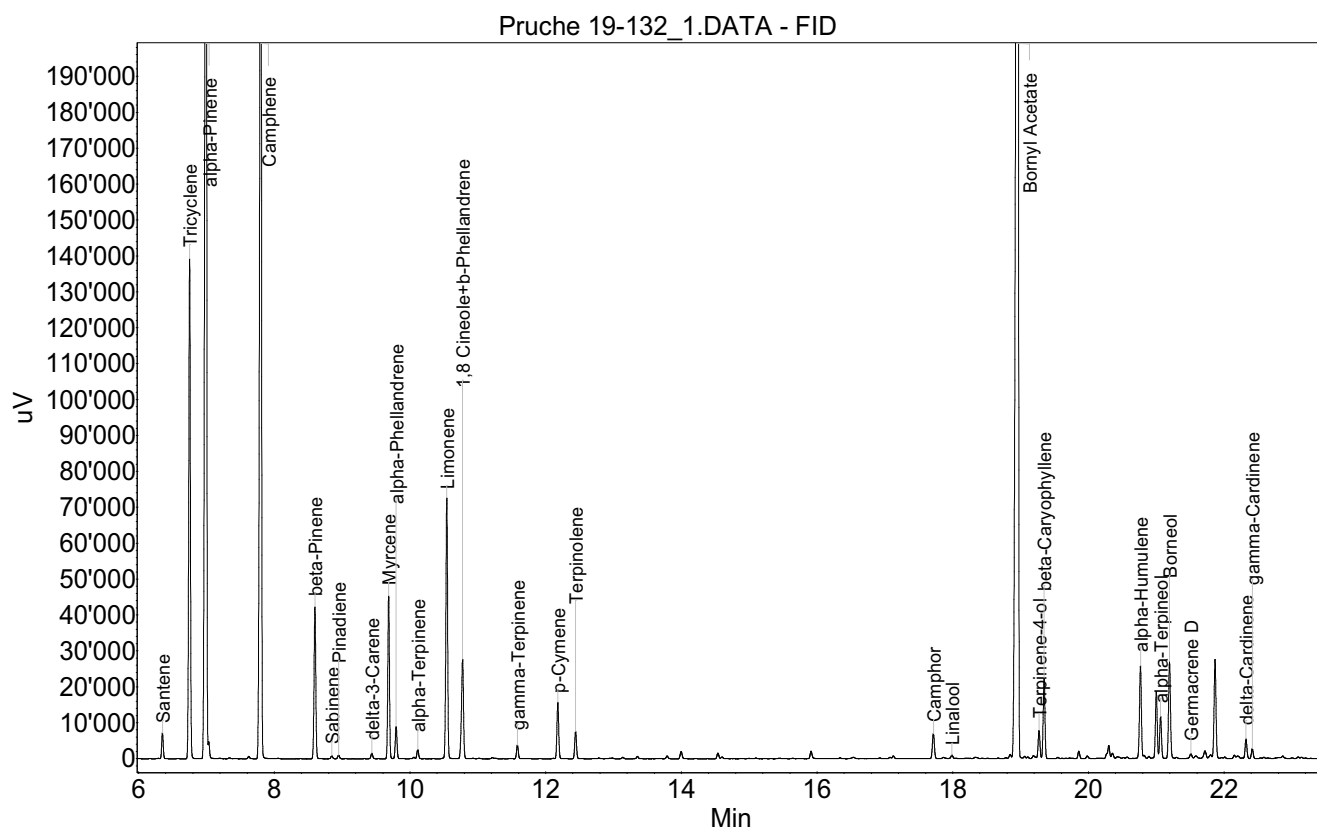
No de lot: 19-132

No de CE: 289-926-6

Date of analysis: 31.03.2020 20:31:07

System: GC-430 FID

Column: BGB Wax 60m / 0.25mm / 0.25um



# RAPPORT D'ANALYSE



## Huile essentielle Pruche 19-132

Index	Name	Time [Min]	Area [uV.Min]	Area % [%]	Allergene
1	Santene	6.35	188.6	0.322	
2	Tricyclene	6.75	3872.9	6.622	
3	alpha-Pinene	6.99	12925.3	22.099	
4	Camphene	7.80	9641.7	16.485	
5	beta-Pinene	8.60	1255.0	2.146	
6	Sabinene	8.85	24.0	0.041	
7	Pinadiene	8.95	30.4	0.052	
8	delta-3-Carene	9.44	47.7	0.082	
9	Myrcene	9.69	1274.5	2.179	
10	alpha-Phellandrene	9.80	269.4	0.461	
11	alpha-Terpinene	10.12	72.0	0.123	
12	Limonene	10.54	2179.3	3.726	Directive 2003/15EC (7th)
13	1,8 Cineole+b-Phellandrene	10.78	961.9	1.645	
14	gamma-Terpinene	11.58	115.5	0.197	
15	p-Cymene	12.18	481.0	0.822	
16	Terpinolene	12.44	233.9	0.400	
17		14.00	69.6	0.119	
18		14.54	51.8	0.089	
19		14.60	16.5	0.028	
20		15.91	71.4	0.122	
21	Camphor	17.72	239.8	0.410	
22	Linalool	17.99	34.3	0.059	Directive 2003/15EC (7th)
23		18.85	33.0	0.056	
24	Bornyl Acetate	18.96	18881.7	32.282	
25	Terpinene-4-ol	19.27	231.4	0.396	
26	beta-Caryophyllene	19.35	672.7	1.150	
27		19.86	63.8	0.109	
28		19.98	25.8	0.044	
29		20.28	31.7	0.054	
30		20.30	112.5	0.192	
31		20.36	47.0	0.080	
32	alpha-Humulene	20.77	853.8	1.460	
33		20.89	18.4	0.031	
34		21.00	577.0	0.986	
35	alpha-Terpineol	21.06	368.6	0.630	
36	Borneol	21.20	888.2	1.519	
37	Germacrene D	21.51	48.2	0.082	
38		21.58	32.2	0.055	
39		21.72	86.2	0.147	
40		21.80	37.1	0.063	
41		21.87	904.8	1.547	
42		22.15	30.5	0.052	
43		22.20	37.9	0.065	
44	delta-Cardinene	22.32	174.5	0.298	

# RAPPORT D'ANALYSE



## Huile essentielle Pruche 19-132

Index	Name	Time [Min]	Area [uV.Min]	Area % [%]	Allergene
45	gamma-Cardinene	22.42	87.1	0.149	
46		23.83	29.7	0.051	
47		26.45	58.0	0.099	
48	Nerolidol	27.00	31.2	0.053	
49		27.38	69.6	0.119	
Total			58489.2	100.000	