

# RAPPORT D'ANALYSE



## Huile essentielle

### Pruche

Nom botanique latin: *Tsuga canadensis*

Provenance: Canada

Parties distillées: Rameaux et aiguilles

Culture: Bio

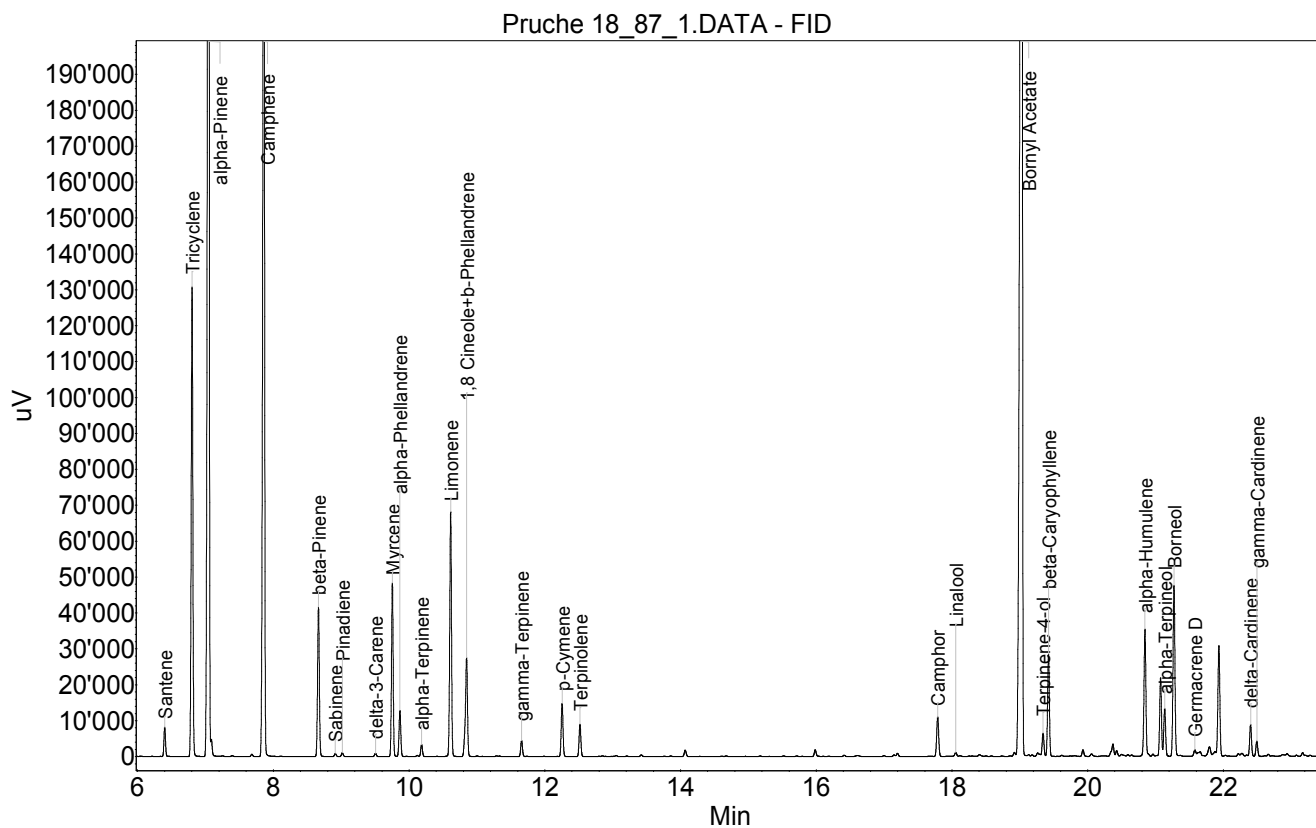
No de lot: 18-87

No de CE: 289-926-6

Date of analysis: 05.09.2018 18:00:09

System: GC-430 FID

Column: BGB Wax 60m / 0.25mm / 0.25um



## Huile essentielle

### Pruche

Index	Name	Time [Min]	Area [uV.Min]	Area % [%]	Allergene
1	Santene	6.40	223.4	0.396	
2	Tricyclene	6.80	3672.0	6.504	
3	alpha-Pinene	7.05	11848.0	20.984	
4	Camphene	7.86	8745.7	15.490	
5	beta-Pinene	8.67	1254.0	2.221	
6	Sabinene	8.91	25.6	0.045	
7	Pinadiene	9.02	31.4	0.056	
8	delta-3-Carene	9.51	28.6	0.051	
9	Myrcene	9.76	1370.8	2.428	
10	alpha-Phellandrene	9.87	389.8	0.690	
11	alpha-Terpinene	10.19	97.4	0.172	
12	Limonene	10.61	2051.5	3.633	Directive 2003/15EC (7th)
13	1,8 Cineole+b-Phellandrene	10.85	980.5	1.737	
14	gamma-Terpinene	11.66	137.4	0.243	
15	p-Cymene	12.26	452.1	0.801	
16	Terpinolene	12.52	274.8	0.487	
17		14.07	60.6	0.107	
18		15.99	63.3	0.112	
19		17.20	21.8	0.039	
20	Camphor	17.79	378.2	0.670	
21	Linalool	18.06	37.7	0.067	Directive 2003/15EC (7th)
22		18.92	32.3	0.057	
23	Bornyl Acetate	19.03	17082.6	30.255	
24	Terpinene-4-ol	19.34	156.0	0.276	
25	beta-Caryophyllene	19.42	864.3	1.531	
26		19.93	57.9	0.103	
27		20.06	27.8	0.049	
28		20.35	26.8	0.047	
29		20.37	110.2	0.195	
30		20.43	47.8	0.085	
31		20.50	20.2	0.036	
32	alpha-Humulene	20.85	1138.8	2.017	
33		20.88	18.1	0.032	
34		21.08	677.6	1.200	
35	alpha-Terpineol	21.14	420.4	0.745	
36	Borneol	21.27	1572.4	2.785	
37	Germacrene D	21.58	65.4	0.116	
38		21.66	79.2	0.140	
39		21.79	118.1	0.209	
40		21.93	1073.7	1.902	
41		22.22	14.6	0.026	
42	delta-Cardinene	22.40	274.9	0.487	
43	gamma-Cardinene	22.49	132.9	0.235	
44		23.17	41.9	0.074	

# RAPPORT D'ANALYSE



**Huile essentielle**

**Pruche**

Index	Name	Time [Min]	Area [uV.Min]	Area % [%]	Allergene
45		23.91	25.6	0.045	
46		26.52	50.5	0.089	
47	Nerolidol	27.06	53.7	0.095	
48		27.44	55.1	0.098	
49		29.50	43.7	0.077	
50		29.70	34.6	0.061	
Total			56461.7	100.000	