

RAPPORT D'ANALYSE



Huile essentielle Sapin blanc

Nom botanique latin: *Abies pectinata* (alba)

Provenance: Autriche

Parties distillées: Aiguilles

Culture: Biologique

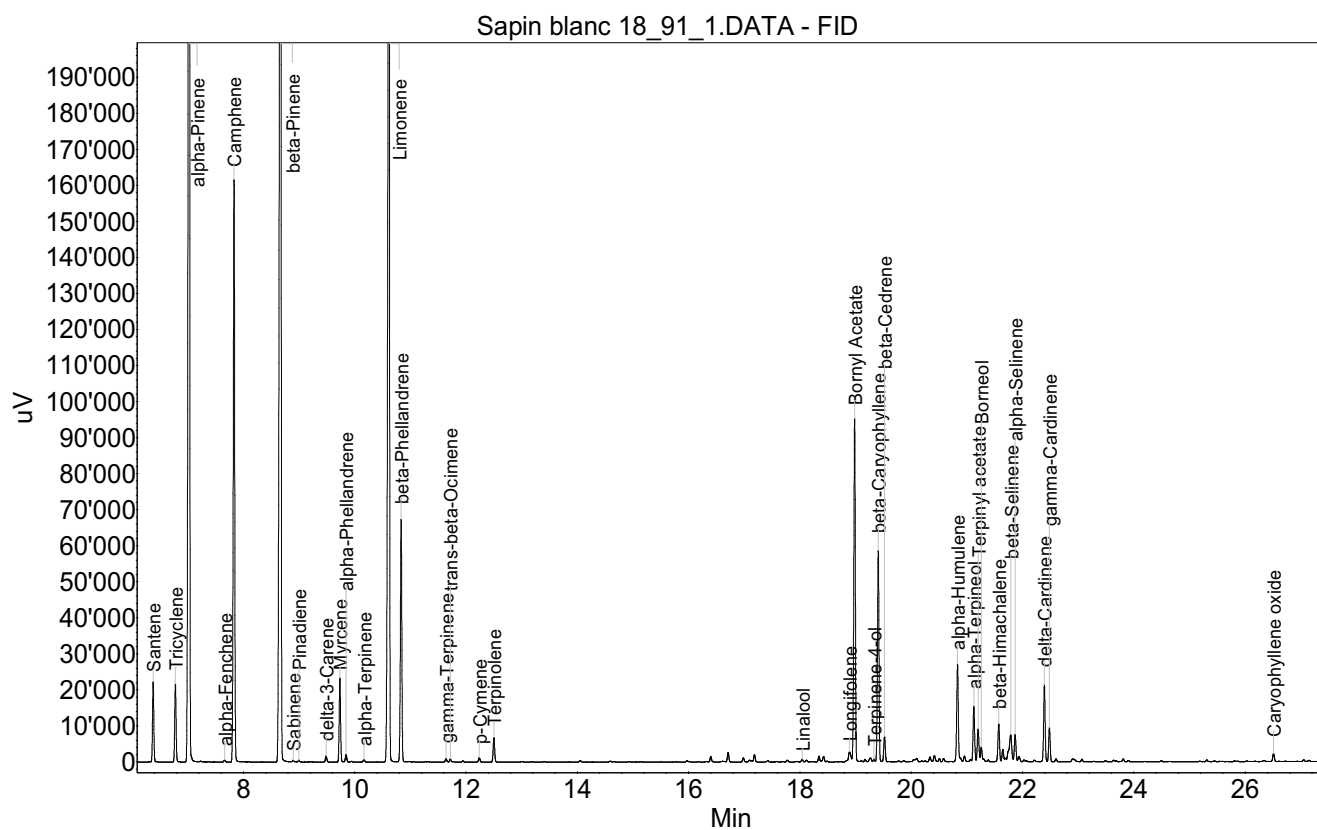
No de lot: 18-91

No de CE: 284-637-1

Date of analysis: 04.10.2018 13:12:21

System: GC-430 FID

Column: BGB Wax 60m / 0.25mm / 0.25um



Huile essentielle Sapin blanc

Index	Name	Time [Min]	Area [uV.Min]	Area % [%]	Allergene
1	Santene	6.38	592.1	1.049	
2	Tricyclene	6.78	611.5	1.084	
3	alpha-Pinene	7.02	12737.3	22.575	
4	alpha-Fenchene	7.66	17.2	0.030	
5	Camphene	7.83	4772.9	8.459	
6	beta-Pinene	8.67	13579.5	24.067	
7	Sabinene	8.89	11.9	0.021	
8	Pinadiene	9.00	15.0	0.027	
9	delta-3-Carene	9.49	50.5	0.089	
10	Myrcene	9.73	661.7	1.173	
11	alpha-Phellandrene	9.84	65.4	0.116	
12	alpha-Terpinene	10.17	22.6	0.040	
13	Limonene	10.61	10420.8	18.469	Regulation No 1223/2009
14	beta-Phellandrene	10.83	2013.5	3.569	
15	gamma-Terpinene	11.64	29.6	0.052	
16	trans-beta-Ocimene	11.72	27.6	0.049	
17	p-Cymene	12.24	38.1	0.068	
18	Terpinolene	12.50	208.9	0.370	
19		16.40	48.4	0.086	
20		16.71	82.7	0.147	
21		16.98	37.8	0.067	
22		17.18	56.3	0.100	
23	Linalool	18.04	22.5	0.040	Regulation No 1223/2009
24		18.34	50.1	0.089	
25		18.42	58.8	0.104	
26	Longifolene	18.89	137.9	0.244	
27	Bornyl Acetate	18.98	3012.4	5.339	
28		19.17	22.2	0.039	
29		19.27	49.1	0.087	
30	Terpinene-4-ol	19.33	23.0	0.041	
31	beta-Caryophyllene	19.41	1856.9	3.291	
32	beta-Cedrene	19.52	228.2	0.404	
33		20.34	49.6	0.088	
34		20.42	65.0	0.115	
35		20.50	29.6	0.052	
36		20.58	35.2	0.062	
37	alpha-Humulene	20.83	890.8	1.579	
38		20.87	33.2	0.059	
39		20.96	51.9	0.092	
40	alpha-Terpineol	21.12	512.8	0.909	
41	Terpinyl acetate	21.20	309.8	0.549	
42	Borneol	21.26	129.5	0.229	
43		21.30	17.9	0.032	
44	beta-Himachalene	21.57	353.6	0.627	

RAPPORT D'ANALYSE



Huile essentielle Sapin blanc

Index	Name	Time [Min]	Area [uV.Min]	Area % [%]	Allergene
45		21.64	114.3	0.203	
46		21.69	32.8	0.058	
47		21.75	77.2	0.137	
48	beta-Selinene	21.79	354.8	0.629	
49	alpha-Selinene	21.87	265.3	0.470	
50		21.94	57.3	0.102	
51	delta-Cardinene	22.39	671.3	1.190	
52	gamma-Cardinene	22.48	303.3	0.537	
53		22.60	28.6	0.051	
54		22.90	55.2	0.098	
55		23.07	22.5	0.040	
56		23.81	24.4	0.043	
57	Caryophyllene oxide	26.51	74.5	0.132	
58		27.43	28.5	0.051	
59		28.38	35.5	0.063	
60		29.34	211.5	0.375	
61		29.41	25.4	0.045	
Total			56423.6	100.000	