

Certificate of Analysis

Product: Thym linalol

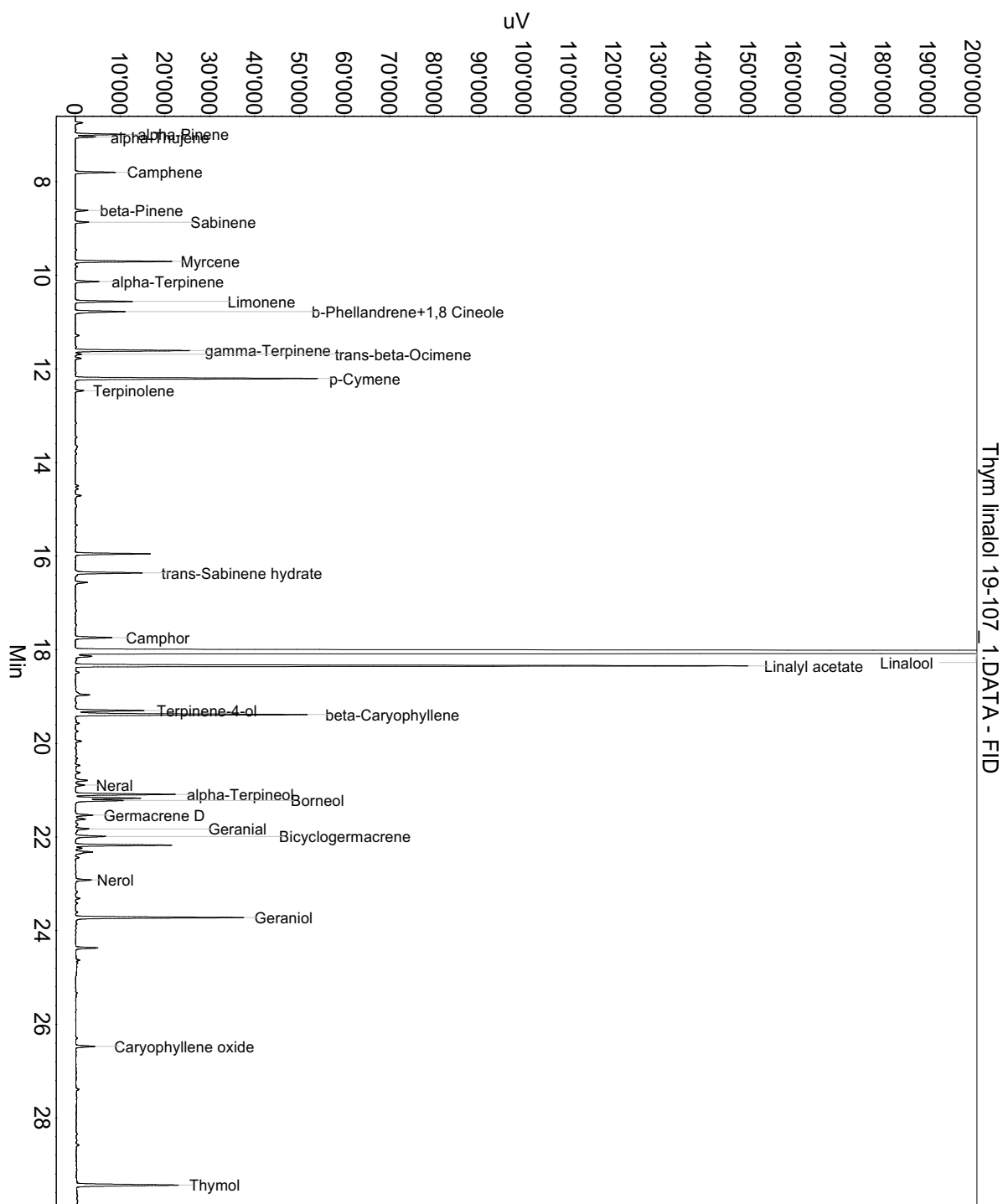
Lot: 19-107

Date of analysis: 25.10.2019 16:21:01

System: GC-430 FID

Column: BGB Wax 60m / 0.25mm / 0.25um

Method: 180403 essential basis 60min ERA



This data sheet was issued to the best of our knowledge and is supplied without warranty for its correctness or accuracy.

Certificate of Analysis

Product: Thym linalol

Lot: 19-107

Date of analysis: 25.10.2019 16:21:01

System: GC-430 FID

Column: BGB Wax 60m / 0.25mm / 0.25um

Method: 180403 essential basis 60min ERA

Index	Name	Time [Min]	Area [uV.Min]	Area % [%]	Allergene
1		6.74	53.8	0.076	
2	alpha-Pinene	6.99	311.7	0.438	
3	alpha-Thujene	7.04	125.9	0.177	
4	Camphene	7.80	266.9	0.375	
5	beta-Pinene	8.61	87.3	0.123	
6	Sabinene	8.87	90.4	0.127	
7	Myrcene	9.70	608.5	0.855	
8	alpha-Terpinene	10.13	159.5	0.224	
9	Limonene	10.56	389.3	0.547	Directive 2003/15EC (7th)
10	b-Phellandrene+1,8 Cineole	10.78	384.4	0.540	
11	gamma-Terpinene	11.61	765.7	1.076	
12	trans-beta-Ocimene	11.69	42.1	0.059	
13		11.77	39.1	0.055	
14	p-Cymene	12.21	1630.0	2.291	
15	Terpinolene	12.47	59.5	0.084	
16		14.71	44.4	0.062	
17		15.95	500.9	0.704	
18	trans-Sabinene hydrate	16.36	479.5	0.674	
19		16.56	91.3	0.128	
20	Camphor	17.74	278.8	0.392	
21	Linalool	18.07	51167.2	71.926	Directive 2003/15EC (7th)
22		18.14	133.2	0.187	
23	Linalyl acetate	18.34	4209.4	5.917	
24		18.96	114.6	0.161	
25	Terpinene-4-ol	19.30	481.4	0.677	
26	beta-Caryophyllene	19.38	1646.4	2.314	
27		19.57	24.7	0.035	
28		19.95	42.1	0.059	
29		20.47	40.1	0.056	
30		20.63	40.0	0.056	
31		20.79	101.8	0.143	
32	Neral	20.89	71.1	0.100	(= Citral) Directive 2003/15EC (7th)
33	alpha-Terpineol	21.09	687.8	0.967	
34		21.17	459.2	0.645	
35	Borneol	21.22	357.2	0.502	
36	Germacrene D	21.53	131.0	0.184	
37		21.62	75.4	0.106	
38	Geranial	21.83	108.1	0.152	(= Citral) Directive 2003/15EC (7th)

This data sheet was issued to the best of our knowledge and is supplied without warranty for its correctness or accuracy.

Certificate of Analysis

Product: Thym linalol

Lot: 19-107

Date of analysis: 25.10.2019 16:21:01

System: GC-430 FID

Column: BGB Wax 60m / 0.25mm / 0.25um

Method: 180403 essential basis 60min ERA

Index	Name	Time [Min]	Area [uV.Min]	Area % [%]	Allergene
39	Bicyclogermacrene	21.99	237.7	0.334	
40		22.17	633.0	0.890	
41		22.24	47.7	0.067	
42		22.32	153.5	0.216	
43	Nerol	22.92	114.4	0.161	
44	Geraniol	23.72	1149.4	1.616	Directive 2003/15EC (7th)
45		24.37	155.6	0.219	
46	Caryophyllene oxide	26.47	140.5	0.197	
47	Thymol	29.44	825.0	1.160	
48	Carvacrol	30.01	1382.5	1.943	
Total			71138.9	100.000	

This data sheet was issued to the best of our knowledge and is supplied without warranty for its correctness or accuracy.