

RAPPORT D'ANALYSE



Huile essentielle Thym linalol

Nom botanique latin: Thymus vulgaris CT linalol

Provenance: Espagne

Parties distillées: Sommités fleuries

Culture: Biologique

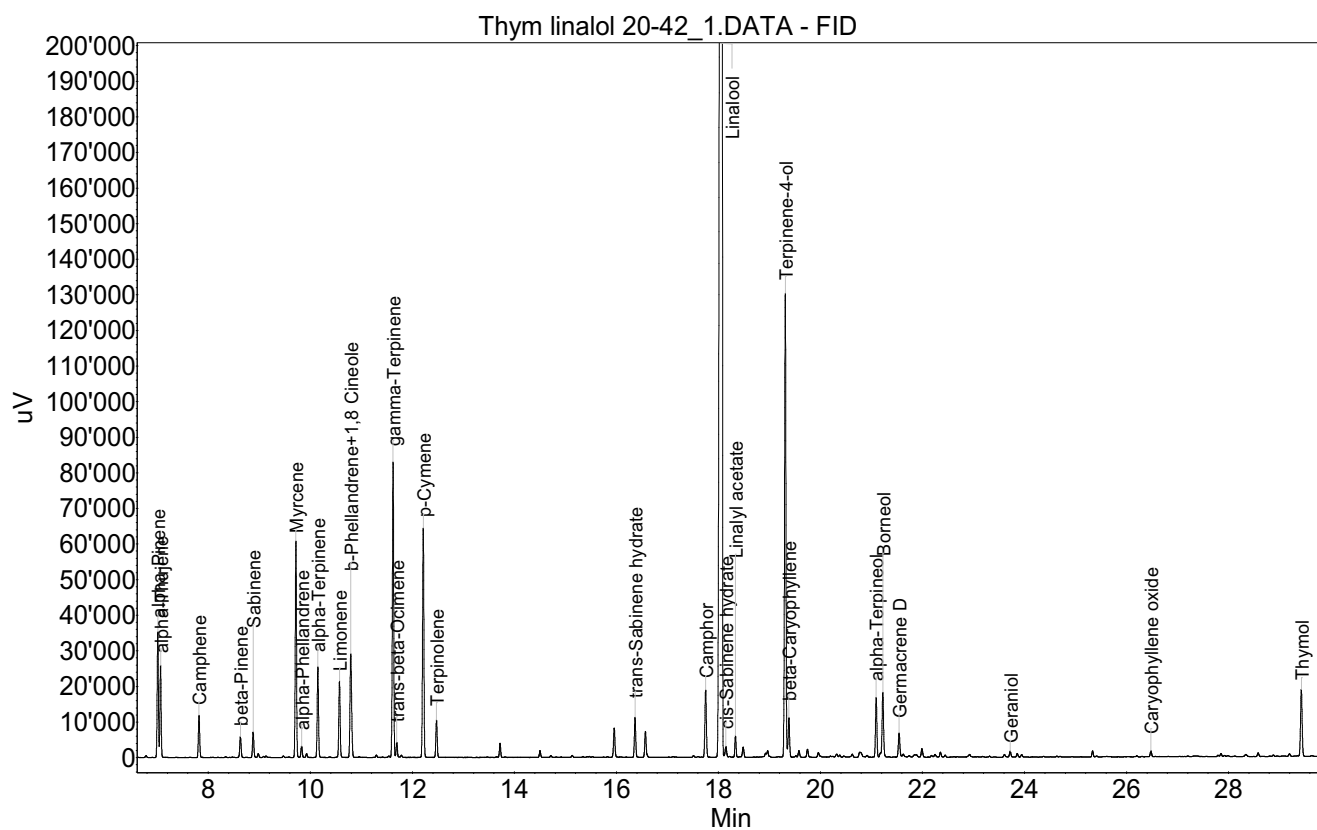
No de lot: 20-42

No de CE: 285-397-0

Date of analysis: 12.06.2020 10:05:38

System: GC-430 FID

Column: BGB Wax 60m / 0.25mm / 0.25um



Huile essentielle Thym linalol

Index	Name	Time [Min]	Area [uV.Min]	Area % [%]	Allergene
1	alpha-Pinene	7.01	984.6	1.572	
2	alpha-Thujene	7.06	699.4	1.116	
3	Camphene	7.82	351.0	0.560	
4	beta-Pinene	8.63	182.4	0.291	
5	Sabinene	8.88	216.1	0.345	
6		8.98	32.4	0.052	
7	Myrcene	9.72	1725.7	2.754	
8	alpha-Phellandrene	9.83	99.7	0.159	
9		9.93	34.4	0.055	
10	alpha-Terpinene	10.15	762.0	1.216	
11	Limonene	10.57	657.5	1.049	Directive 2003/15EC (7th)
12	b-Phellandrene+1,8 Cineole	10.79	1074.8	1.716	
13	gamma-Terpinene	11.62	2518.9	4.021	
14	trans-beta-Ocimene	11.69	119.5	0.191	
15	p-Cymene	12.21	1972.0	3.148	
16	Terpinolene	12.47	323.4	0.516	
17		13.72	113.2	0.181	
18		14.50	56.5	0.090	
19		15.96	268.0	0.428	
20	trans-Sabinene hydrate	16.37	350.9	0.560	
21		16.57	243.2	0.388	
22	Camphor	17.75	645.2	1.030	
23	Linalool	18.06	41441.9	66.149	Directive 2003/15EC (7th)
24	cis-Sabinene hydrate	18.15	118.6	0.189	
25	Linalyl acetate	18.33	173.6	0.277	
26		18.49	99.8	0.159	
27		18.97	29.4	0.047	
28	Terpinene-4-ol	19.31	4073.3	6.502	
29	beta-Caryophyllene	19.38	365.7	0.584	
30		19.58	58.1	0.093	
31		19.75	77.5	0.124	
32		19.96	43.5	0.069	
33		20.32	32.8	0.052	
34		20.38	17.6	0.028	
35		20.62	30.9	0.049	
36		20.77	48.8	0.078	
37		20.79	39.0	0.062	
38	alpha-Terpineol	21.09	523.0	0.835	
39		21.18	30.5	0.049	
40	Borneol	21.22	613.9	0.980	
41	Germacrene D	21.54	240.1	0.383	
42		21.62	31.3	0.050	
43		21.99	82.7	0.132	
44		22.35	43.7	0.070	

RAPPORT D'ANALYSE



Huile essentielle Thym linalol

Index	Name	Time [Min]	Area [uV.Min]	Area % [%]	Allergene
45	Geraniol	23.72	55.3	0.088	Directive 2003/15EC (7th)
46		23.86	32.3	0.052	
47		25.33	51.1	0.082	
48	Caryophyllene oxide	26.48	54.2	0.087	
49		27.85	23.7	0.038	
50		28.58	34.2	0.055	
51	Thymol	29.43	681.6	1.088	
52	Carvacrol	30.00	70.3	0.112	
Total			62648.9	100.000	